

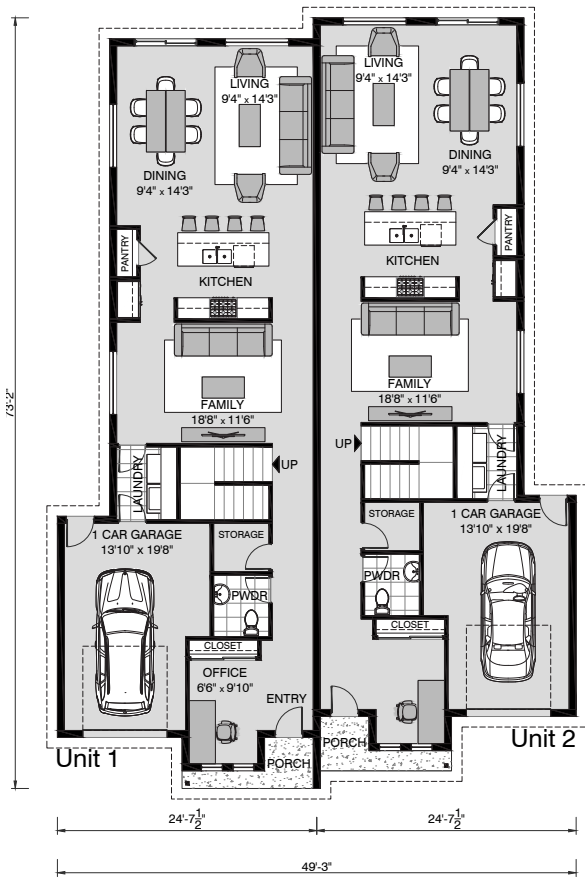


Coronado 4460

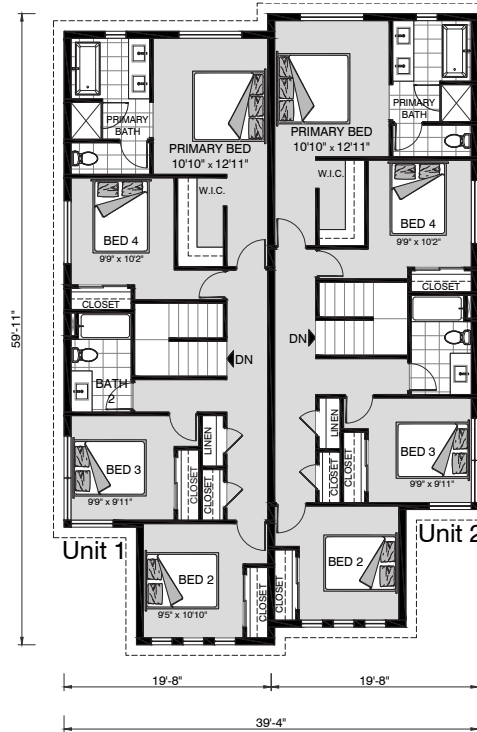
8 : 4 + 0.5 + 0.5 : 2

The Coronado is a two-story duplex cleverly configured with an offset mirrored layout with matching features, divided by a central wall with stunning curb appeal.

Each 2,230 square foot unit features 4 bedrooms, 2.5 bathrooms, 1-car garage, an office, laundry room, and two separate living areas. The Coronado is both flexible and smart, providing an ideal home and investment for families, couples and individuals alike. A beautiful kitchen anchoring the substantial open main room creates a natural hub between the living and dining areas at the back and a central family room. With an optional patio area and large sliding doors, immersing yourself in the outdoors has never been easier. For added sanctuary, the second floor delivers with 3 bedrooms, a full bath and back side primary retreat with walk in closet and ensuite for the touch of luxury you deserve.



Main Floor



Second Floor

Coronado 4460

8 Beds | 4 + 0.5 + 0.5 Baths | 2 Garages

Main Floor	2321 ft ²	Garage	544 ft ²
Second Floor	2139 ft ²	Porch	74 ft ²
Total Living	4460 ft²	Total Unconditioned	618 ft²



***Disclaimer:** Subject to site limitations. Images and photographs may depict fixtures, finishes and features either not supplied by G.J. Gardner Homes or not included in the price stated. For detailed home pricing please talk to a New Homes Consultant.