



Oakdale

G.J. Gardner. HOMES



CLASSIC



RESORT



HAMPTONS



URBAN



Oakdale

One of our most space-efficient home designs, the Pacific Express features a clever floorplan that makes the most of family life.

A welcoming foyer opens onto the private master bedroom with stylish ensuite and walk-in robe. As you walk down the hall, you'll pass a large lounge room before entering the heart of the home – a spacious, open-plan living space comprising kitchen with breakfast bar that flows naturally to the dining and family room before opening onto the outdoor alfresco area.

Three remaining bedrooms share a stylish bathroom and central activity room.

Taking inspiration from the simple pleasures in life, the Pacific lets you easily enjoy life just the way it should be lived.

Images in this brochure may depict landscaping, fences and upgraded fixtures, features or finishes which are not included. For availability and pricing of these items please discuss with your new home consultant.

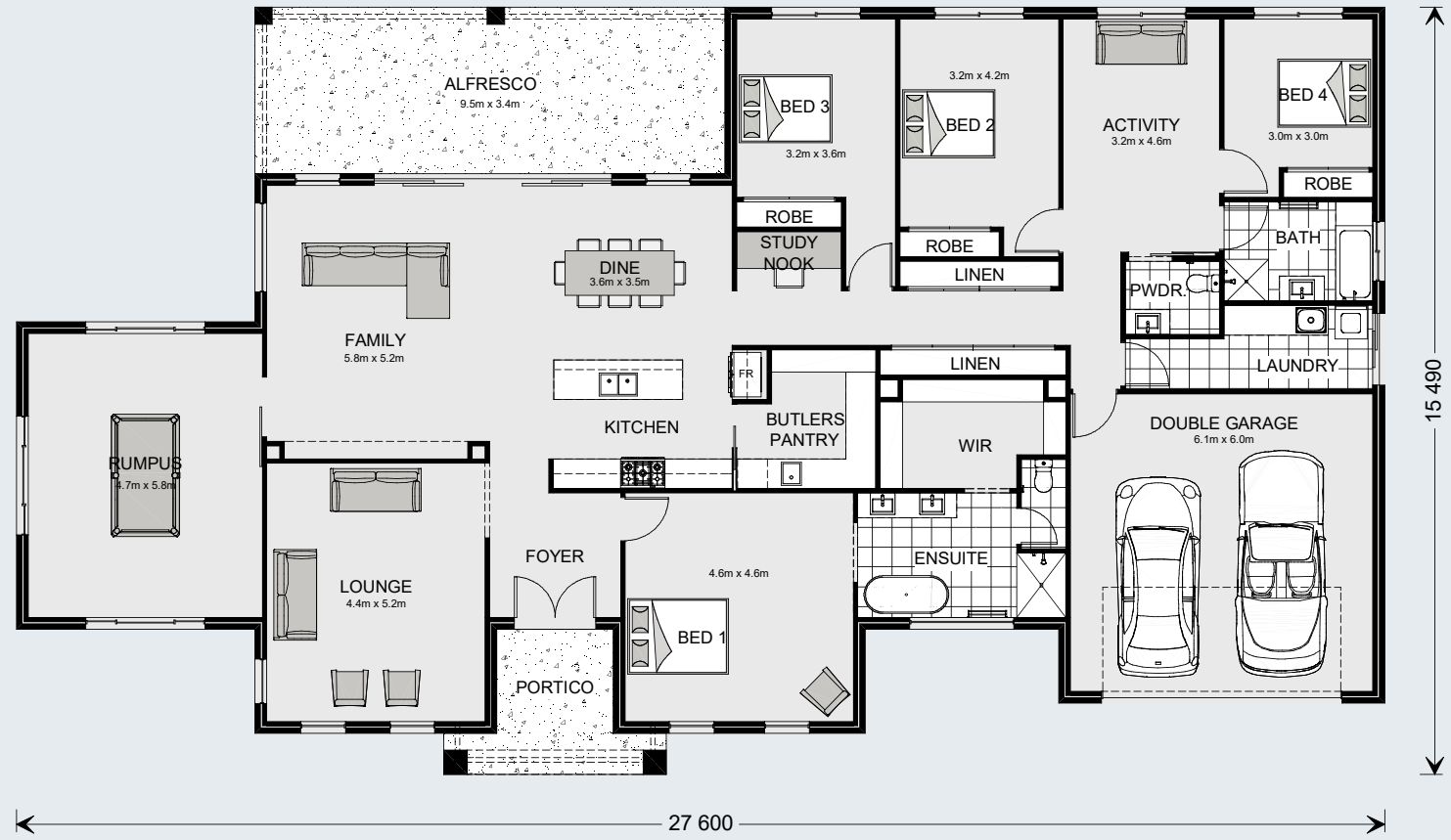
Oakdale

355

4 | 2.5 | 2

Floor Areas

Living	275.0 m ²
Garage	39.9 m ²
Alfresco	31.9 m ²
Porch	8.7 m ²
Total	355.5 m²



The North Point

Orientate your floorplan with the main living areas positioned due north to ensure your home is optimised for the sun during the day, as well as throughout the seasons.

By getting the right floor plan for your block, taking into consideration the north point, you will get the best out of the land that you've chosen.

Oakdale

255

4 | 2.5 | 2

Floor Areas

Living	195.0 m ²
Garage	37.3 m ²
Alfresco	17.9 m ²
Porch	4.8 m ²
Total	255.0 m²







G.J. Gardner. HOMES

gjjardner.com.au