



Rochedale

G.J. Gardner. HOMES

Rochedale Design

Visit our 3D tours to explore our beautiful home range at gigardner.com.au





Our Difference

What continues to let G.J. Gardner Homes stand out from other builders is the G.J. Way: a level of quality that extends to all we do.

Our homes have been mindfully crafted by our teams of architects and designers. Drawing from today's leading home trends, Australian lifestyles and a goal to streamline living, we're world-renowned for our designs. Through our wide and well-connected franchise system, our designs are constantly inspired by real communities and their ways of living across the country. Building hundreds of family homes each year gives us unrivalled knowledge of what makes a house a home.



EXECUTIVE



MANOR



RESORT



URBAN



Rochedale

The ultimate in modern family living the Rochedale Prestige design exclusive to G.J. Gardner Homes is a popular pod-style home designed for large lifestyle blocks, offering separation and privacy through three distinct living zones.

The central zone holds the family living and entertaining areas with modern kitchen and butler's pantry that opens onto a large, covered alfresco area with optional outdoor kitchen. A separate lounge, office and gym add to the impressive features of this home.

A designated kids' wing includes a central activity area surrounded by the bedrooms and complete with family bathroom, powder room and study nook.

On the other side of the home parents can escape, where they'll find a private master retreat with large ensuite, walk in robe and private verandah.

Images in this brochure may depict landscaping, fences and upgraded fixtures, features or finishes which are not included. For availability and pricing of these items please discuss with your new home consultant.

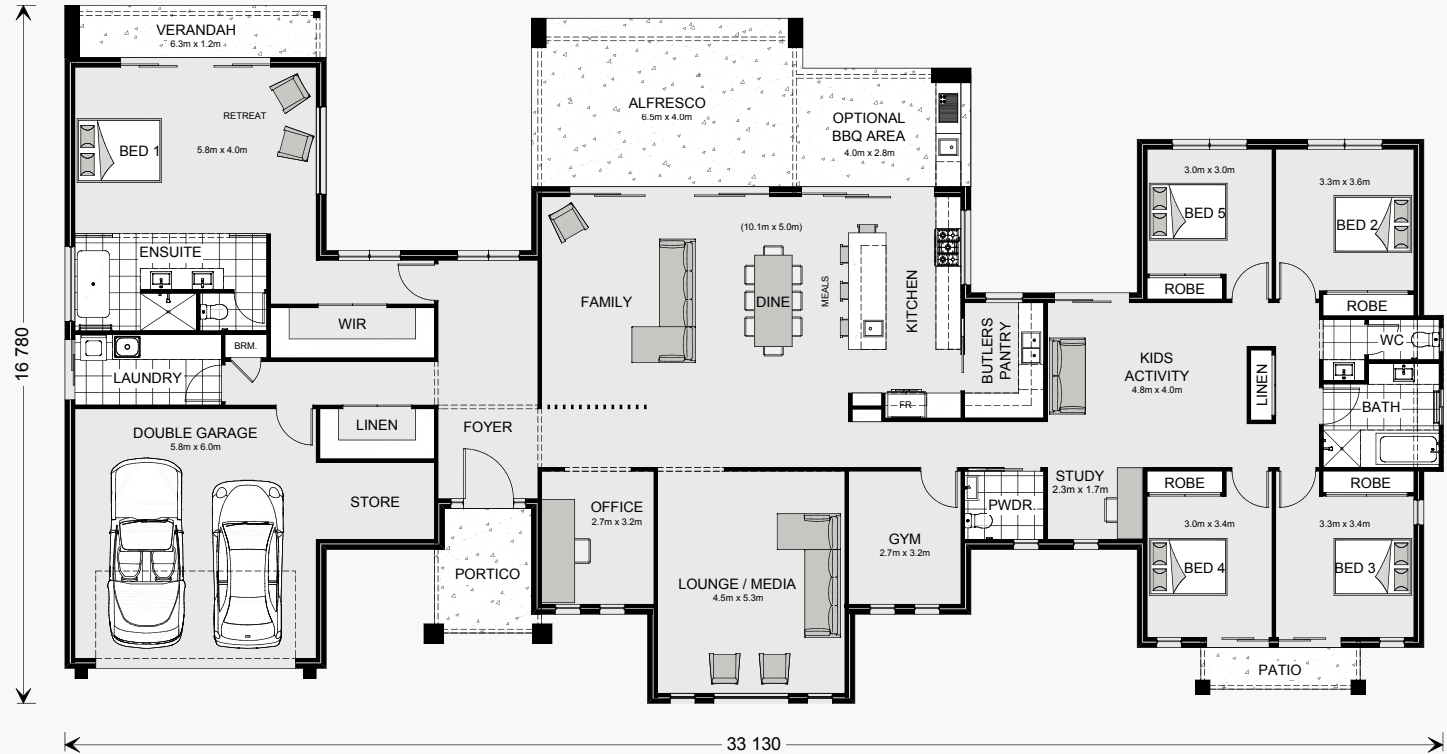
Rochedale 412

5 | 2.5 | 2



Floor Areas

Living	311.2 m ²
Garage	44.3 m ²
Alfresco	37.9 m ²
Portico	6.9 m ²
Patio	3.8 m ²
Verandah	7.9 m ²
Total	412.0 m²



The North Point

Orientate your floorplan with the main living areas positioned due north to ensure your home is optimised for the sun during the day, as well as throughout the seasons.

By getting the right floor plan for your block, taking into consideration the north point, you will get the best out of the land that you've chosen.

Rochedale 370

🚗 5 | 🚗 2.5 | 🚗 2



Floor Areas

Living	281.1 m ²
Garage	41.6 m ²
Alfresco	35.6 m ²
Portico	4.8 m ²
Verandah	7.7 m ²
Total	370.8 m²



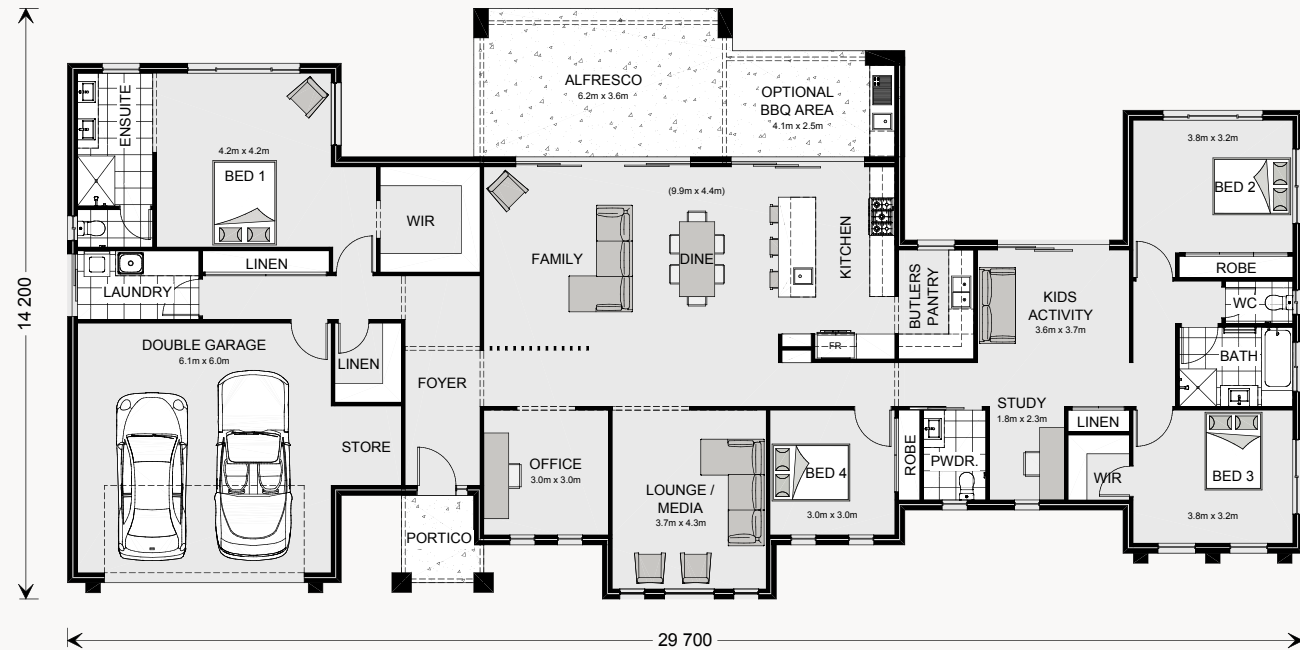
Rochedale 327

🛏️ 4 | 🚿 2.5 | 🚗 2



Floor Areas

Living	246.6 m ²
Garage	43.7 m ²
Alfresco	32.8 m ²
Portico	3.9 m ²
Total	327.0 m²



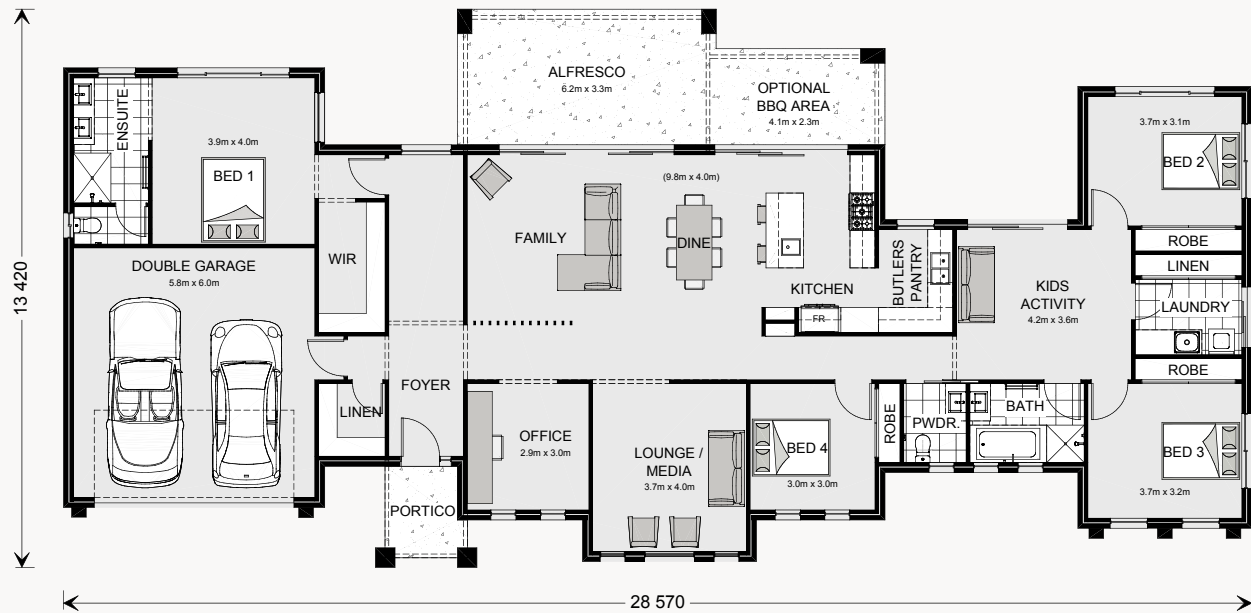
Rochedale 294

4 | 2.5 | 2



Floor Areas

Living	221.9 m ²
Garage	38.7 m ²
Alfresco	29.7 m ²
Portico	4.0 m ²
Total	294.3 m²







G.J. Gardner. HOMES

ggardner.com.au